

# Neighboring islands

## YAGAJI ISLAND

Nature explorer? Immerse yourself in the wonders of camping, fishing, and kayaking right here!



## KOURI ISLAND

These Heart Rocks! A total bucket-list gem you can't skip! This island might be just 1km radius, but Mother Nature really outdid herself!



## SESOKO ISLAND

Take a picturesque romantic drive along the Sesoko Bridge! Jump into the perfect shallow emerald beach and enjoy thrilling marine sports!



## IE ISLAND

This little slice of heaven is just a quick 30-minute ferry jaunt from Motobu Port! Pack your bags and get ready to dive into paradise!



## FOLLOW US

FACEBOOK



INSTAGRAM



NAVY MWR WEBSITE



CUSTOMER SURVEY



## COMMUNITY RECREATION



### BUSINESS HOURS

Sunday - Thursday 07:00 - 16:00  
Friday & Saturday 07:00 - 18:00



### CONTACT

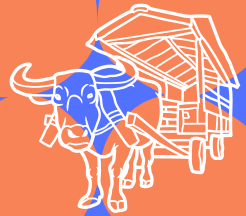
DSN 622-1876 / 1877  
Cell +81-98-954-1876 / 1877



Navy MWR Okinawa Pocket Guide Series 4

もっと /motto/ more

# MOTOBU NAKIJIN





About 1 hour 30 minutes from White Beach

## NAKIJIN CASTLE RUINS

今帰仁城跡

 600 JPY

This location is treasured among the nine UNESCO World Heritage Sites, recognized as the Gusuku Sites and Related Properties of the Kingdom of Ryukyu. Once the esteemed capital of Hokuzan (the Northern Mountain), these castle ruins have transformed from their original role into a revered sanctuary where visitors honor their ancestors. If your visit aligns with the captivating cherry blossom season, don't miss the chance to experience its charm—it will whisk you away to a fairytale!

## OKINAWA CHURAUMI AQUARIUM

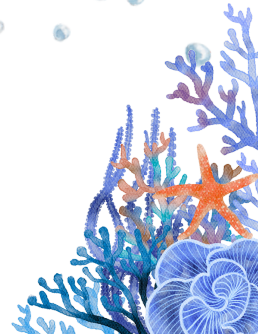
沖縄美ら海水族館



2180 JPY

11 minutes from Nakijin Castle Ruins

Discover a world-class aquarium where visitors of all ages can revel in aquatic wonders. The main tank is one of the largest in the world, offering a breathtaking glimpse into underwater wonder. Here, you shall encounter magnificent whale sharks, graceful manta rays, and a spectacular variety of tropical sea creatures!



## BISE-FUKUGI TREE ROAD

備瀬のフクギ並木



6 minutes from Churaumi Aquarium

Savor a delightful walk or an exhilarating bike ride under the timeless canopy of the Fukui trees. Charming cafes and restaurants that provide a perfect opportunity to recharge after a day of exploration. Now, let the moment unfold as you settle by the seawall, soaking in the tranquil farewell of the day with the enchanting Okinawa sunset.

